



**Comprehensive Digital Health Solution
For Healthier Communities**

Next-Gen User Centric Healthcare Network

 www.yolohealth.in



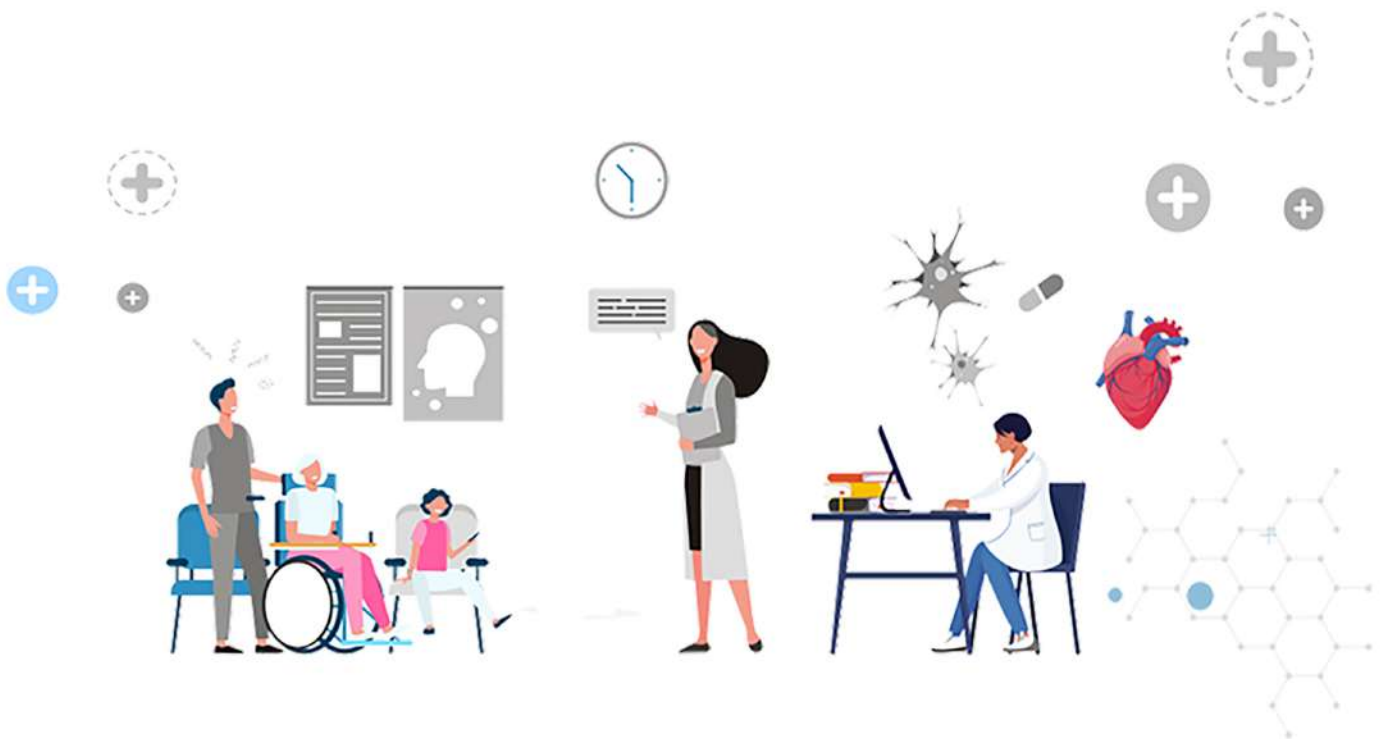
Access your **Health Data** in 10 minutes
before **Doctor Consultation**.



About YoloHealth

We, at HealthATM India Private Limited, well established & reputable HealthTech company in field of Manufacturing of various products under the brand name "Yolohealth"

Yolohealth is a technology venture, pioneering in the field of Health Internet of Things (IoT). It primarily focuses on building remote health monitoring and tele-consultation applications.



Yolohealth has built its flagship product "HealthATM, HealthBAG & Mobile Medical Unit", which combines instant diagnostics and tele-consultation into one integrated platform. It is an aggregation of the US FDA / EU CE / CDSCO certified medical In vitro diagnostic medical devices (IVD) and cloud-connected backend. It enables paramedical professionals to diagnose several health parameters and diseases, bringing technology-enabled primary and preventive healthcare services near to the masses.

We have supplied Medical Devices to various Government, Semi-Government, Public sectors and Non-Government Organisations in the last 10 years. We are also a verified Original Equipment Manufacturer (OEM) on the Government e-Marketplace (GeM) portal.

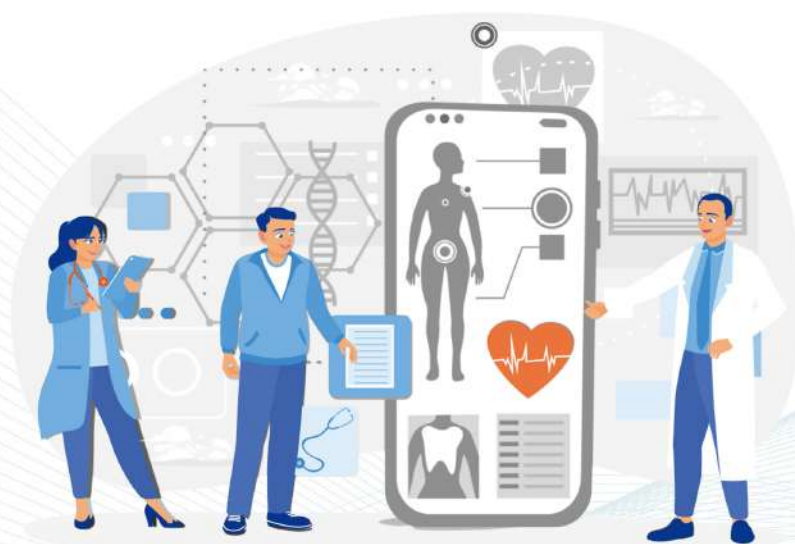
About HealthATM

"HealthATM" is an aggregation of US FDA/ EU CE/ CDSCO certified medical lot devices combined with HIPAA compliant software backend.

It enables Paramedical professionals to diagnose several health parameters and diseases, solving the problem of primary health service in rural/remote areas.

It is also a cloud connected platform that enables Tele-Consultation. Integrated Doctor consultation platform with doctor login and patient management.

- ◆ High-resolution Camera and Touch screen.
- ◆ More than 60 parameters checked in a few minutes.
- ◆ ABDM Compliance to create ABHA IDs
- ◆ Several AI-enabled health check-up Solution (Coming soon).



Instant Diagnostic
& results



Live Doctor
Consultation



Digital Health
record

About HealthBAG

HealthBAG is a portable health solution containing various IoT-enabled medical devices for comprehensive diagnostics.

It enables healthcare providers to perform non-invasive and invasive tests, covering essential metrics like blood pressure, blood glucose, oxygen saturation, body composition, hemoglobin, HbA1c etc.



This device is HIPAA-compliant, cloud-connected and can be used in remote or underserved areas, providing easy access to teleconsultation with real-time test results and instant prescriptions.

Its design allows for door-to-door health screenings, making it ideal for mobile healthcare services in hard-to-reach locations.



About Digital Portable X-ray

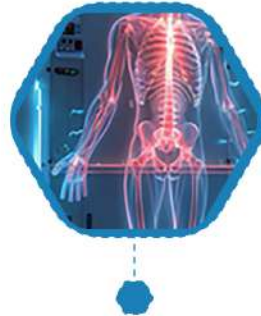


The Digital Portable X-ray with Artificial Intelligence (AI) is an innovative, cutting-edge solution designed to revolutionize diagnostic imaging. This advanced medical device combines the convenience of portability with the power of AI, enabling healthcare providers to deliver precise, efficient and rapid diagnoses directly at the point of care.



Portability

Lightweight and transportable for use in hospitals, clinics, field settings, and home care.



AI-Powered Analysis

Assists in detecting anomalies, enhancing image quality, and providing real-time analysis.



High-Quality Imaging

Delivers high-resolution images with advanced sensors and processing.



Efficiency and Speed

Speeds up image acquisition and interpretation for faster diagnoses.



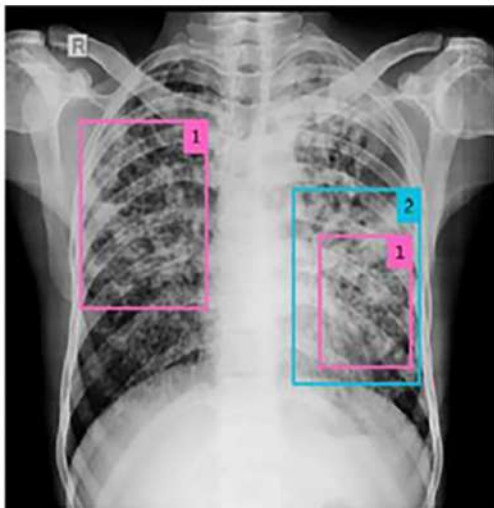
User-Friendly Interface

Simple controls suitable for all levels of medical professionals.

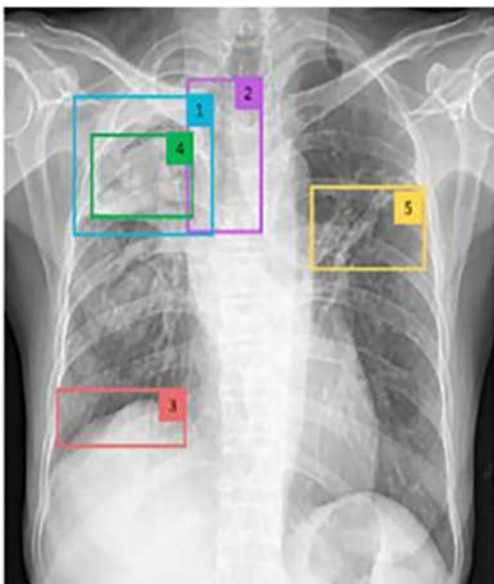
Why Choose This Technology?

With the integration of AI, healthcare professionals can significantly enhance diagnostic accuracy and improve patient outcomes. The portable design ensures flexibility and accessibility, breaking barriers to medical imaging in challenging locations. Embrace this innovative solution to deliver better, faster and more reliable healthcare services.

Prompt: Identifying following pathologies in given Chest X-Ray (consolidation, Nodules, Blunting of CP Angle, Lobe collapse, deviation of trachea, migration of diaphragm, cavity, reticular fibrotic changes)



Numerous **nodular opacities**¹ of varying sizes in both lungs, Consolidatory changes with **air bronchograms**² Indicates active infective aetiology.



Collapse of right upper lobe¹
Rightward **deviation of trachea**²
Cranial **migration of right hemidiaphragm**³ **Cavity**⁴ and **Reticular fibrotic changes**⁵ Indicates Old Pulmonary Tuberculosis.



About Mobile Medical Unit

The Medical Mobile Unit is a mobile healthcare clinic designed to deliver essential medical services in underserved or remote areas.

This vehicle is equipped with medical IoT devices and diagnostic tools that allow healthcare professionals to conduct primary health screenings, such as blood tests, basic checkup, ECG, Urine checkup & other essential diagnostics i.e

- ◆ Audiometry
- ◆ Ophthalmology etc.

The unit also supports teleconsultation and quick health assessments even in isolated communities. This mobility makes it ideal for public health initiatives, community health screenings allowing healthcare to reach people directly in locations with limited healthcare infrastructure.





Test Parameters

GENERAL BODY CHECKUP (16)

Height	Bone Mass	Systolic BP
Weight	Muscle Mass	Diastolic BP
Body Mass Index	Visceral Fat	Pulse Rate
Hydration	Metabolic Age	Oxygen Saturation
Fat%	Muscle Quality Score	Temperature
Basal Metabolic Rating		

LIFESTYLE CHECKUP (5)

Blood Sugar (Fasting Sugar Random Sugar Post Prandial Sugar) Hemoglobin HbA1c



URINE TESTS (10)

Glucose	PH
Bilirubin	Protein
Ketone	Urobilinogen
Specific Gravity	Nitrite
Blood	Leukocytes

CARDIAC CHECKUP (7)

12 Lead ECG Lipid Profile (Total Cholesterol High-Density Lipoprotein Low-Density Lipoprotein)	Triglycerides Non-HDL HDL Ratio)
--	--

TELE-CONSULTATION (3)

Digital Stethoscope

Digital Otoscope

Digital Dermoscope

RAPID DIAGNOSTIC CHECKUP (20)

Pregnancy HIV I & II Malaria Dengue Chikungunya	Leptospira Filariasis Scrub Typhus Hepatitis A Typhoid	S.Typhi/Paratyphi Ag Helicobacter Pylori Troponin Covid - 19 Ag Fecal Occult Blood	TORCH Panel (Toxoplasmosis Rubella Cytomegalovirus HSV-1 HSV-2)
---	--	--	---

ADDITIONAL ADVANCED CHECKUP (29)

Lung Function Test Fetal Heart Rate Eye Checkup Hearing Checkup OAE Alcohol Breath Analyser Stress Assessment Oral Checkup	WBC (Total Leukocyte Count Neutrophils Lymphocytes Monocytes Eosinophils Basophils)	CRP PCT RSV Ag Strep A Ag S. Pneumonia Ag hs CRP CK MB NT proBNP	D Dimer Beta - hCG LH TSH (Serum) T4 ft4 TSH WB
---	--	---	---

The list of parameters can be added further based on specific requirements.

About Y Health

World's Most Advanced Metabolic Platform



Monitor your glucose trends in real-time using our app.
Gain insights into how your diet and exercise routines affect your glucose levels with immediate, practical feedback.

These real-time prompts empower you to make informed decisions, helping you enhance and maintain better metabolic health.



Health Check-ups



News Article



Illness To Wellness joins hands with YoloHealth to elevate awareness on preventive healthcare. Through the health screening camps, we're championing early diagnosis and timely intervention for a better tomorrow.



HOME - PRESS RELEASE - CSR: 'ILLNESS TO WELLNESS' JOINS HANDS WITH YOLOHEALTH TO SENSITISE CITIZENS ABOUT...

CSR: 'Illness To Wellness' joins hands with yolohealth to sensitise citizens about preventive healthcare solutions

By The CSR Journal - March 28, 2024



The importance of preventive healthcare cannot be overstated in today's world, which is increasingly grappling with a steep rise in lifestyle-induced diseases and lack of affordable and timely diagnosis. The 'Illness to Wellness' campaign, a national awareness programme aimed at promoting healthy living, in its endeavour to ensure healthier communities, has tied up with YoloHealth, a healthcare technology company, to sensitise the citizens on the importance of detecting potential health issues at an early stage.



News Exclusives Leaders Speak Events Awards Webinars More

Illness to Wellness campaign ties up with YoloHealth to create awareness of preventive healthcare



New Delhi: The importance of preventive healthcare cannot be overstated in today's world, which is increasingly grappling with a steep rise in lifestyle-induced diseases and a lack of affordable and timely diagnosis. The 'Illness to Wellness' campaign has tied up with YoloHealth.

To create awareness, Illness to Wellness is organising health camps in New Delhi across three days. The first camp is being held at Janpath Bhawan Market in association with the Janpath Traders Association, targeting nearly 200 people comprising shop owners, their employees and the general public. Two Yolo HealthATMs have been deployed for testing at the site.



HOME MIND BODY SOUL PERSONAL SPACE WORKLIFE CAUSES VIDEO

'Illness To Wellness' & YoloHealth Generate Awareness

Two-day camp gave devotees and staff a chance to avail diagnostic facilities using the latest technology



Incorporated a holistic approach to ensure easy public access to primary and preventive healthcare services. Lifestyle-induced diseases are on the rise, in addition, the age of contracting many diseases which until recently were thought to afflict only those over 50 years of age, has also drastically reduced, leading to serious complications. It needs to be reinforced that many diseases can be prevented and/or controlled through regular testing.

With the objective of raising awareness about the overall benefits of timely and affordable testing, Illness to Wellness and yolohealth held a two-day camp at Gurudwara Bangla Sahib on the 29th and 30th March, 2024 in which over 150 people were tested across 32 blood screening parameters.



News: Latest News Stock Market News Futures News Commodities News Stock Market News Economic Indicators Economy News

Illness to Wellness, Yolohealth generate awareness about preventive healthcare solutions at Gurdwara Bangla Sahib

IANIS - General News - 2024-04-01 13:15



New Delhi, April 1 (IANIS) Lifestyle-induced diseases are on the rise, in addition, the age of contracting many diseases which until recently were thought to afflict only those over 50 years of age, has also drastically reduced, leading to serious complications. It needs to be reinforced that many diseases can be prevented and/or controlled through regular testing. To raise awareness about the overall benefits of timely and affordable testing, Illness to Wellness and Yolohealth held a two-day camp at Gurdwara Bangla Sahib on March 29 and 30, in which over 150 people were tested across 32 blood screening parameters. The 'Illness to Wellness' campaign, a national awareness programme aimed at promoting healthy living, in its endeavour to ensure healthier communities, tied up with Yolohealth, a healthcare technology company, to sensitise the citizens on the importance of detecting potential health issues at an early stage.



Our Esteemed Clients



Govt. of Arunachal Pradesh



Lucknow Smart City



Aligarh Smart City



Cochin Smart Mission Limited



Saharanpur Smart City



Tech Mahindra



Ahmedabad Municipal Corporation



Max Bupa Health Insurance



KMC Digital Hospital
KMC Hospital



Tata Img



SGPGI, Lucknow



NDMC
New Delhi Municipal Corporation



(UPSRTC) Uttar Pradesh State Road Transport Corporation



Indian Railways



UPMSCL
Uttar Pradesh Medical Suppliers Corporation Limited



Government of Zimbabwe



Essar Foundation



Apollo Munich



Milkar life aage badhayein



Our Office

HealthATM India Pvt.Ltd.



Mumbai

📍 211, Woodrow Building,
Veera Desai Rd, Andheri West,
Mumbai, Maharashtra 400053

☎ 022- 46013836

Delhi

📍 A1/51, Block A 1, Nauroji
Nagar, Safdarjung Enclave,
New Delhi, Delhi 110029

☎ 011- 46580554

Lucknow

📍 3/1, Vishwash Khand, Near
Lohiya park chauraha Gomti
Nagar Lucknow, Uttar Pradesh-226010

☎ 0522- 3115827

Bangalore

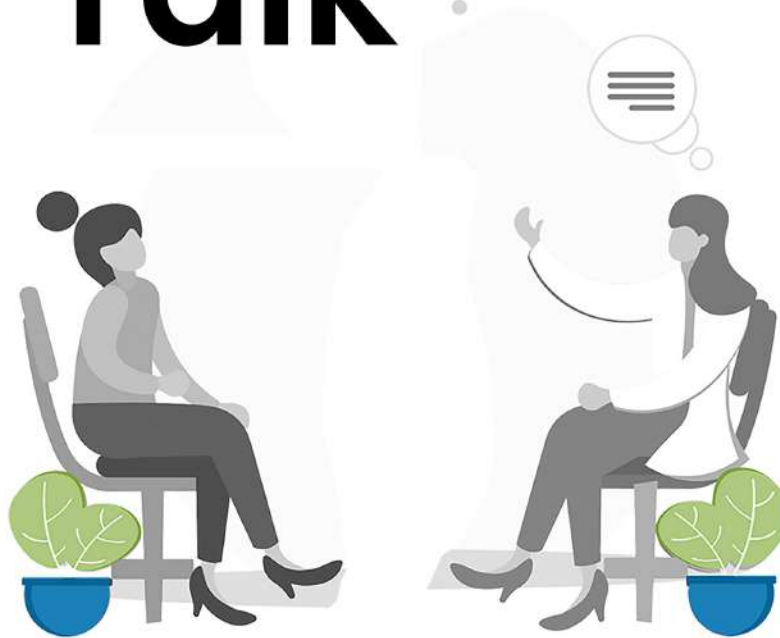
📍 KEONICS, #29/A (E), 27th Main,
7th Cross, Sector 1, HSR Layout,
Bengaluru, Karnataka 560102

☎ +91 80 4120 1149

Your Comprehensive HealthCare Solution Please Ask us More!



Lets Talk




 @yolohealth



 @yolohealth



 @YoloHealth_In



 @yolohealthin



 @yolohealth

hello@yolohealth.in



+91 7400448203



www.yolohealth.in